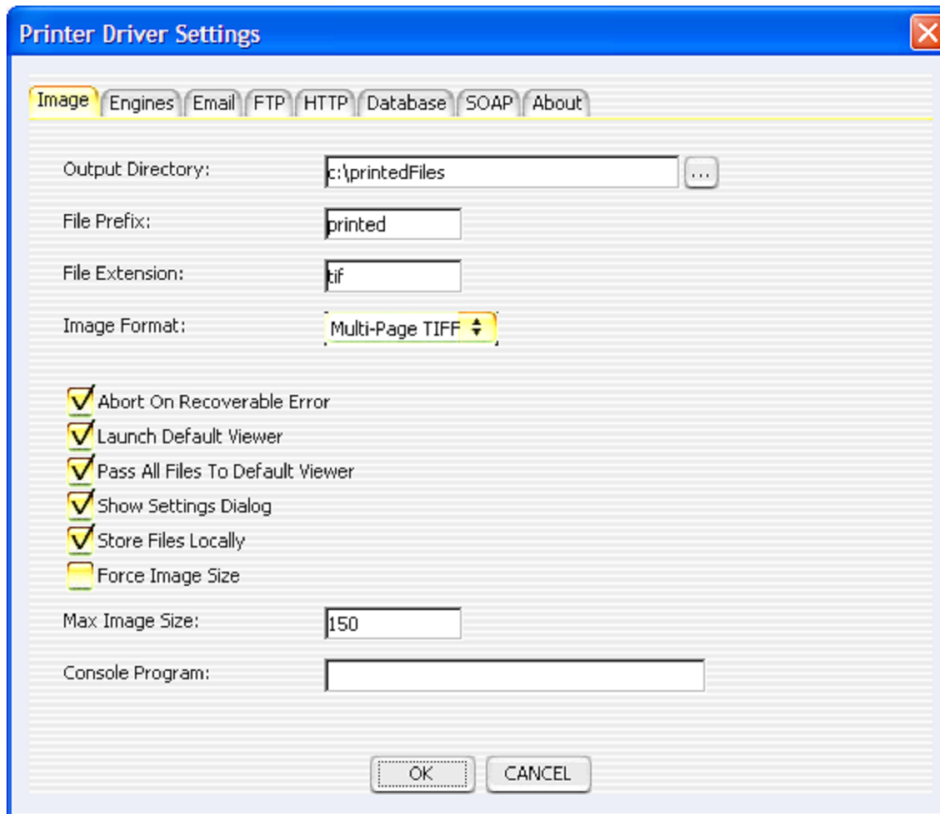


# ES IMAGE PRINTER DRIVER USER MANUAL

ES IMAGE PRINTER DRIVER USER MANUAL	1
Overview	2
Purpose	10
Printer Driver Settings	11
Email Settings	14
FTP Settings	15
HTTP Settings	16
Database Settings	17
SOAP Settings	18
About	19
Displaying the Printer Driver Settings Dialog	20
Advanced Printer Driver Settings	20
Printer Driver Engine	21
Image Directory Import Engine	22
Email Engine	23
File Transfer Protocol Engine	24
Hyper Text Transfer Protocol Engine	25
SOAP Engine	26
Database Import Engine	27
Database Engine	28
Output Text Files	29
Printer Driver Engine Launcher	30
XML Generation	33
Input Gathering GUI Components	34
Enable/Disable the Launcher	39
File and Output Directory Tags	40
Native Printer Driver Settings	41
Advanced Native Printer Driver Settings	43
File System Processor	44
Clipboard Monitor	45

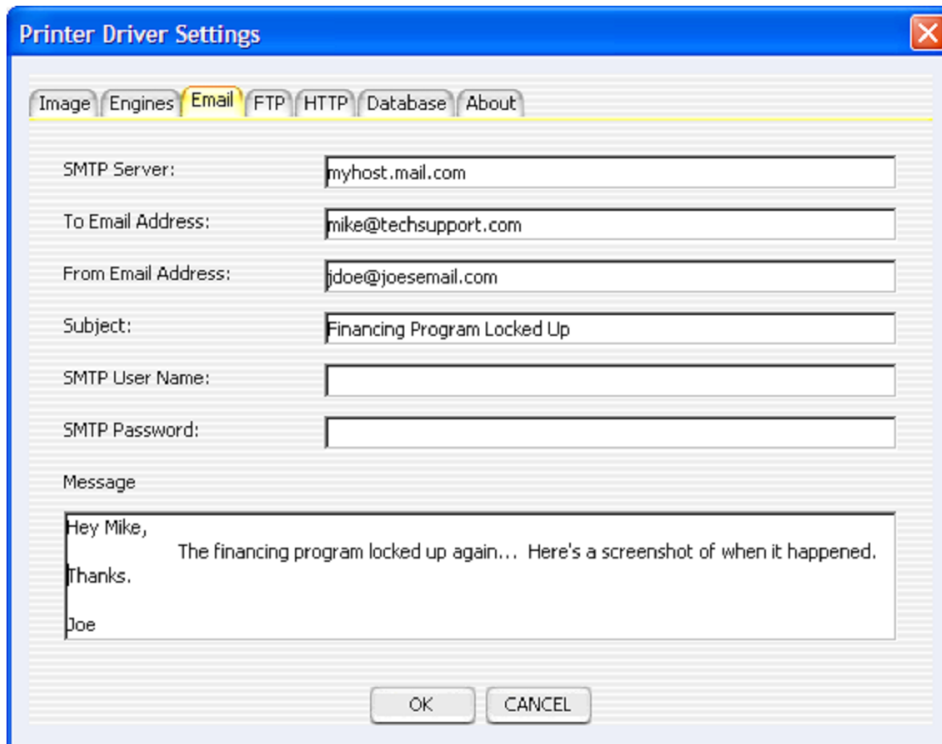
## Overview

ES Image Printer Driver is a software printer driver that is accessible from any program that can utilize a Windows printer. Images are produced from the driver and stored on a specified drive and location with incremental numbers. The printer driver is flexible and supports several image file formats such as PNG, BMP, JPEG, JPEG 2000, TIFF, Multi-Page TIFF, PNM, and PDF.



**FIGURE 1**

It also supports sending an email to anyone via SMTP. The images printed are added as attachments to the email, and users may type in a full text message for the body of the email. This is accomplished by displaying a graphical user interface at print time, which is optional. This interface can be suppressed at each print.



**FIGURE 2**

FTP sending is also an option with the driver. The images that are produced can automatically be uploaded to a FTP server on any TCP/IP network (Intranet, Internet, etc).

Printer Driver Settings

Image Engines Email **FTP** HTTP Database About

FTP Server: joes.ftpservers.com

Port: 21

Login Id: joe

Password: \*\*\*\*\*

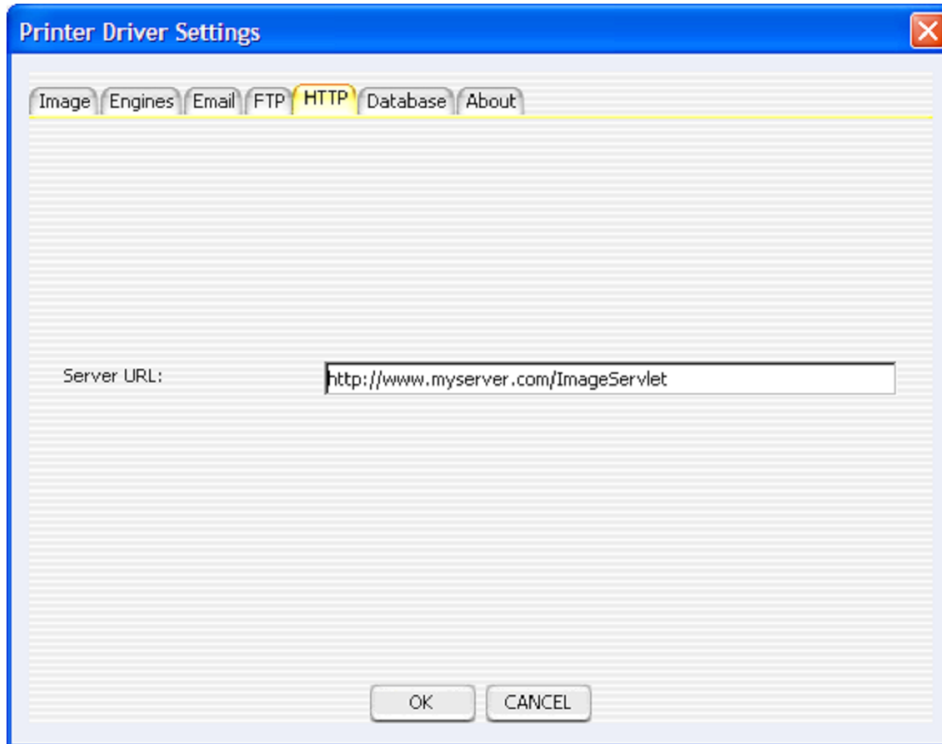
Remote Directory: usr/joe

Remote File Name: screenshot

OK CANCEL

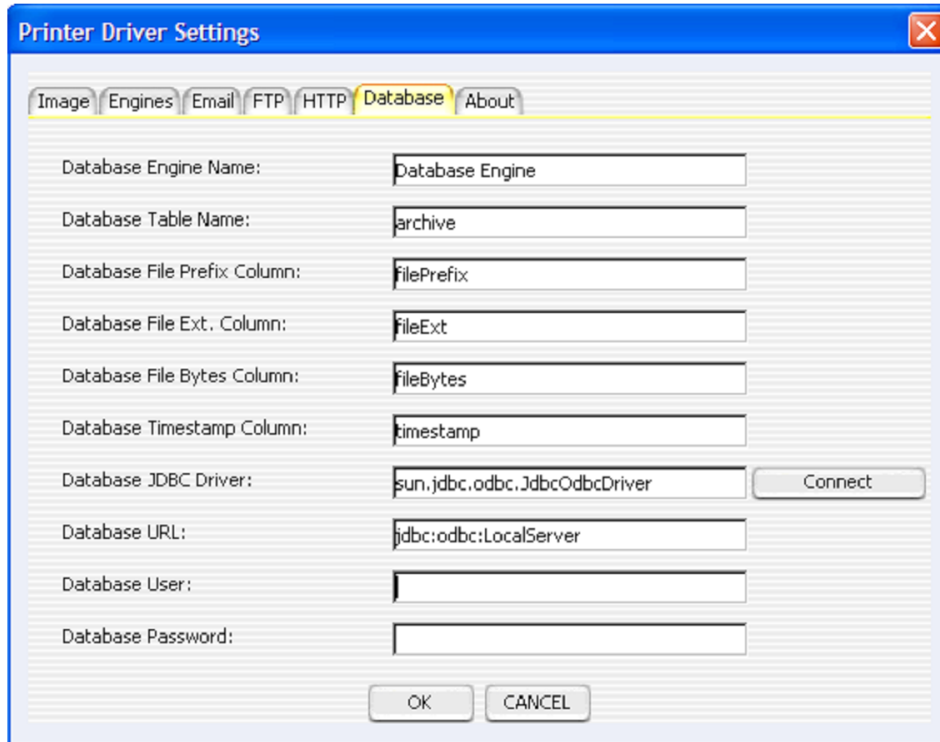
**FIGURE 3**

HTTP posts are also an option with the driver. The images that are produced can automatically be uploaded to a web server via HTTP or HTTPS on any TCP/IP network (Intranet, Internet, etc).



**FIGURE 4**

The driver has the capability to save the images into a database. This can be done with any standard JDBC or ODBC connection.



**FIGURE 5**

SOAP is becoming more and more popular in today's complex environments. It allows various languages, web services, environments, etc., to communicate with each other through a common programming interface. The driver has the ability to send a SOAP message to a Web Service, HTTP Server, etc. with the files base 64 encoded inside as parameters.

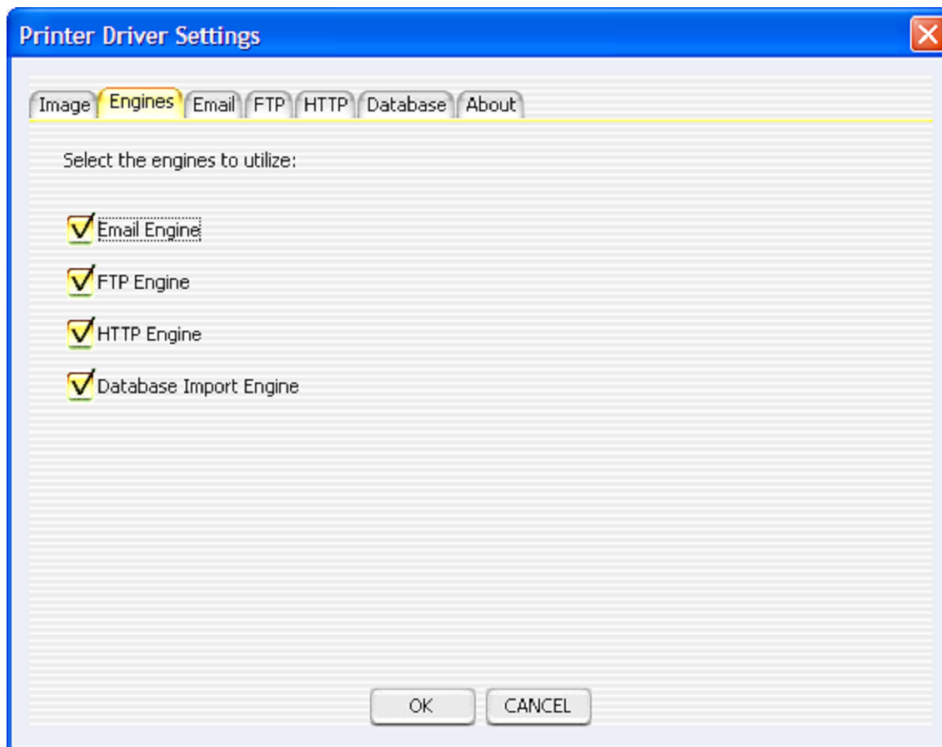
The image shows a 'Printer Driver Settings' dialog box with a blue title bar and a close button in the top right corner. Below the title bar is a tabbed interface with tabs for 'Image', 'Engines', 'Email', 'FTP', 'HTTP', 'Database', 'SOAP', and 'About'. The 'SOAP' tab is selected and highlighted in yellow. The main area of the dialog contains several labeled input fields:

- HTTP Engine Name: SOAP Hyper Text Transfer Protocol Engine
- SOAP Action: es\_soap
- Method Name: setImage
- Variable Name: image
- File Variable Name: fileName
- ID Variable Name: id
- ID Value: %host.name%
- Server URL: http://localhost/test

At the bottom of the dialog, there are two buttons: 'OK' and 'CANCEL'.

**FIGURE 5b**

The optional Email, FTP, HTTP, and Database engines can easily be enabled/disabled from the Engines tab. This allows all the settings to be kept for those engines while preventing them from actually being utilized during the current print.



**FIGURE 6**



The driver is driven by XML files that can be administered for use in business environments or for mass printing.

```
<com.everlast.storage.PrinterDriverEngineInitializer>
  <imageDirectoryImportEngineName>Image Directory Import Engine</imageDirectoryImportEngineName>
  <emailEngineName>Email Engine</emailEngineName>
  <ftpEngineName>File Transfer Protocol Engine</ftpEngineName>
  <removeLocalFilesAfterPrint>false</removeLocalFilesAfterPrint>
  <engineName>Printer Driver Engine</engineName>
  <readOnly>false</readOnly>
  <shutDownTimeOut>300000</shutDownTimeOut>
  <className>com.everlast.storage.PrinterDriverEngine</className>
  <workingDirectory>D:\Program Files\EverlastSoftware\ES Image Printer Driver\Printer Driver Engi
  <showGUI>true</showGUI>
  <guiClassName>com.everlast.storage.PrinterDriverPanel</guiClassName>
  <guid>2df78ea6-72b2-459d-8866-25f60e7c738f</guid>
</com.everlast.storage.PrinterDriverEngineInitializer>
```

**FIGURE 6a**

## **Purpose**

All of these options make the printer driver an excellent tool for bug reporting, problem tracking, etc., for businesses wanting to maximize their business time. For home users, the driver is great for printing web sites, images from other programs, emails, etc. It's also a quick way to share screenshots with friends and family.

All businesses (small, medium, and large) deal with and rely on many other computer programs in order to maximize their employees' time. They often utilize both, 3rd party software, and in-house software, developed specifically for their needs. Almost all businesses have had the experience of finding show-stopping bugs in various programs that prevent them from getting their job done. Often time, businesses have an entire department committed to helping the users either find work a rounds for the software, ways to fix the software, or submit incident reports to the developers of the software. This is a very time consuming task, not only for the computer support department, but also the employees that use the software who must communicate the problems to the support department in a clear manner so that the real problem can be understood. This is where the ES Image Printer Driver can be of great aid and save businesses thousands, if not millions, of dollars a year.

A picture can speak a thousand words, and that is exactly what the driver does. With the simple print of any document, image, screenshot, etc., instead of the results going to a laser printer, images are produced which can be instantly emailed to a support person, transferred to an FTP server, or simply saved to the local computer's storage with one simple click. All of this can happen in the background too, without requiring user interaction, thus saving MORE time for the employees, while maximizing the information for someone to help troubleshoot the problem.

Another common problem in a business environment is sharing information with clients' and/or others in different departments. There are many times when files must be shared but the receiver does not have the correct program to be able to display or view them. Almost every business has some means of viewing images. Images are a universal way to share information. The ES Image Printer Driver instantly allows printing of information from any program and the production of images in several formats. These images can then be emailed, uploaded, etc., to the receiver for their usage.

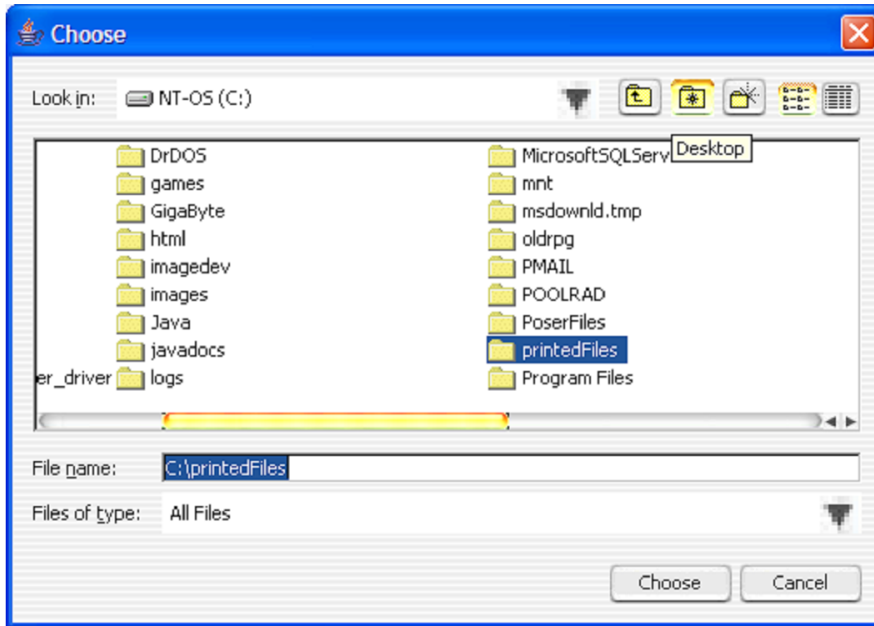
Not only can the ES Image Printer Driver do what was mentioned above, it has been designed to easily develop and plug in other interfaces, so that businesses may tightly integrate with their own support systems, environment, etc. If a certain interface is important to your business, don't hesitate to ask about it, even if it is a completely custom interface. We are dedicated to helping our clients make their businesses more economical and to save them time. After all, time is money.

## Printer Driver Settings

The driver has several standard options and settings in order to produce and save the images created. Figure 1 refers to these options.

- 1) Output Directory – This is the directory to save the produced images to. It can be any standard Windows drive, such as 'c:\myFiles', or it can be a UNC pathname such as '\\winserver\C\uploadarea'. The optional button showing '...' next to the Output Directory displays a file dialog (Figure 1b below) where one can pick the directory with a graphical user interface.
- 2) File Prefix – The prefix to save each file with. This is always followed by an incremental number automatically by the printer driver. For example, if 'printed' was the prefix and 3 pages were printed, the actual file prefixes will be 'printed\_1', 'printed\_2', and 'printed\_3'. The driver automatically detects filenames with the previous name if some already existed, and continues to number from there.
- 3) File Extension – The extension to save each file with. Typically this should be the same as the actual chosen image format, but some users may choose to make this something different. It has no impact on the actual image format produced and can be anything.
- 4) Image Format – This is the actual image format the files are saved as. The possible choices are PNG, BMP, JPEG, TIFF, Multi-Page TIFF, PNM, and PDF. Typically PNG files are the best choice for color prints because of the wide variety of color formats they support. Also, PNG files use lossless compression, which means the images produced are exact images of the data and don't change appearance from their compression. JPEG files can sometimes be smaller than PNG files, but the compression is lossy, so sometimes they can appear blocky or fuzzy. TIFF images are a very popular format used in many document imaging systems. They are probably the best choice for black and white printed documents because of the small file sizes, lossless Group 4 compression, and universal acceptance. However, if there are ever any doubts, PNG is probably the best bet. PDF and Multi-Page TIFF are the only formats that put all the images into a single file (multi-page).
- 5) Abort On Recoverable Error – Sometimes the driver can detect certain types of errors with individual files and 'recover', or basically skip, those files and continue on to the next ones. If this flag is checked, the driver will attempt to do this. If not, the first error will cause the driver to abort and not continue.
- 6) Launch Default Viewer – If this flag is checked, after all the images are produced by the driver, the default Windows program will be launched to view/handle the images.
- 7) Pass All Files to Default Viewer – This flag works in conjunction with the 'Launch Default Viewer' flag. It only applies when the 'Launch Default Viewer' flag is checked. If this flag is checked, all files are passed as multiple separate parameters to the Windows program. Some programs may be able to handle these multiple parameters causing all the images to be opened/viewed instead of just the 1<sup>st</sup> image.

- 8) Show Settings Dialog – If this flag is checked, the dialog displayed in Figures 1-6 will be displayed at print time to allow a user to control and change settings on the fly. Sometimes, especially in businesses, administrators may not want this to prevent the users from making a mistake and causing an error. If that is the case, this flag should not be checked so the settings are automatically used and no dialog is presented.
- 9) Store Files Locally – If this flag is checked, the images will be saved permanently in the specified location, even after all functions are performed (such as emailing, launching default viewer, HTTP post, etc). If it is not checked, the images will be removed after being processed through all the functions.
- 10) Force Image Size – If checked, all images that are larger than the specified max image size will be scaled down. This is useful for making thumbnails or small, consistent image sizes.
- 11) Max Image Size – This is the number of pixels to scale the images to if the 'Force Image Size' option is enabled. The engine will fit either the width or the height of the image to this value if the image is larger.
- 12) Console Program – An optional console program that may be executed and supplied the image file names as arguments. A window will be displayed that will show the standard output messages generated by the console program. The user can interact with the program by typing into standard input through the window if the program so requires. This is not to be confused with the default viewer program, which is a GUI based Windows program. Console programs are text based and usually legacy applications.
- 13) Ok – By clicking the 'Ok' button, the printer driver settings are saved. If the dialog is being displayed during a print, 'Ok' also allows the print to continue and produce images.
- 14) Cancel – By clicking the 'Cancel' button, the printer driver settings are discarded and stay as they were. If the dialog is being displayed during a print, 'Cancel' causes the print to abort.



**FIGURE 1b**

## Email Settings

The driver has the optional ability to send an email to one or more people through SMTP. The printed files become attachments to the email. Figure 2 refers to these options.

- 1) SMTP Server – This is the IP Address or Domain Name of the SMTP server to use to send the email.
- 2) To – This is the list of email addresses to send the email to. The email addresses can be chained together with a comma as a delimiter. For example: 'info@everlastsoftware.com,sales@everlastsoftware.com'
- 3) From – This is the email address that the email appears to come from.
- 4) Subject – This is the subject/title of the email.
- 5) Message – This is the message, or body, of the email. Since the email is sent just like a normal email, this could be instructions, details about the printed images, questions, etc.

## FTP Settings

One more mechanism in which the driver has the optional ability to send the printed files is by FTP (File Transfer Protocol). Figure 3 refers to these options.

- 1) FTP Server – This is the IP Address or Domain Name of the FTP server that will be receiving the files.
- 2) Port – The port in which the FTP server is listening on. This is almost always port 21.
- 3) Login Id – The login id to use to make the connection.
- 4) Password – The corresponding password for the login id.
- 5) Remote Directory – This is the location on the remote server where the files will be uploaded to.
- 6) Remote File Name – This is the filename prefix to be used for the files being uploaded. They will be assigned an incremental number in the same manner as the 'File Prefix' from Figure 1, only this time it will be on the remote server.

## HTTP Settings

Besides being able to utilize FTP, the driver is also able to do HTTP (Hyper Text Transfer Protocol) posts. Figure 4 refers to these options.

- 1) Server URL – This is the full URL to a web server that can accept HTTP or HTTPS posts. The example in figure 4 is using HTTP. In order to do a secure upload, HTTPS may be used. To compare to figure 4, the URL would be 'https://www.myserver.com/ImageServlet' for secure transfer. The URL is parsed the standard way any HTTP URL is:  
protocol://domain\_name:port/context.



## Database Settings

The printed files can be automatically inserted into a database using JDBC or ODBC. Figure 5 refers to these options.

- 1) Database Engine Name – This is the name of the Database Engine to utilize. This allows for reuse of database specific settings (user, password, etc.) across multiple configurations if the same name is specified. If a different name is specified for multiple configurations, each will have it's own settings.
- 2) Database Table Name – The name of the table to insert into.
- 3) Database File Prefix Column (optional) – The name of the column to store the filename prefix.
- 4) Database File Extension Column (optional) – The name of the column to store the filename extension.
- 5) Database File Bytes Column – The name of the column to store the file's bytes.
- 6) Database Timestamp Column (optional) – The name of the column to store a timestamp of when the file was saved into the database.
- 7) Database JDBC Driver – This is the Java class name of the actual JDBC driver to use. On Windows, if ODBC is desired, always leave this set to 'sun.jdbc.odbc.JdbcOdbcDriver'. If a specific JDBC driver is wanted, simply plug in the class name and make sure the driver is in the classpath when the driver executes.
- 8) Database URL – The URL for the JDBC driver to connect to the database. On Windows, if ODBC is desired, the String must always start with 'jdbc:odbc:' and end with the data source name such as 'LocalServer'.
- 9) Database User – The user name to obtained connections to the database.
- 10) Database Password – The password for the user name to obtain connections to the database.
- 11) Connect – This button will automatically test the connection to the database using the supplied settings in the dialog. If any errors occur, they will be displayed in a dialog.

## SOAP Settings

SOAP is becoming more and more popular in today's complex environments. The driver has the ability to send a SOAP message to a Web Service, HTTP Server, etc. with the files base 64 encoded inside as parameters. Figure 5b refers to these options.

- 1) HTTP Engine Name - This is the name of the HTTP Engine to utilize. This allows for reuse of server URL's across multiple configurations if the same name is specified. If a different name is specified for multiple configurations, each will have it's own URL
- 2) SOAP Action - The SOAP action for the message.
- 3) Method Name - The name of the method specified in the SOAP message.
- 4) Variable Name - The name of the attribute for the file bytes (base 64 encoded String).
- 5) File Variable Name - The optional name of the attribute for the file name (String).
- 6) ID Variable Name - This field is optional. It allows one to use the special tags in the 'ID Value' field in order to read environment variables and other settings to supply with the SOAP message. This is mainly used to uniquely identify a client sending the message.
- 7) ID Value - The actual value to send through the SOAP message. The tags should be utilized here if desired. The default is '%host.name%' which sends the host's name.
- 8) Server URL - The HTTP/HTTPS URL to the SOAP receiver. This will typically be a Web Service.

## **About**

The about tab is simply for informational purposes about the product. It has no settings or options.

## **Displaying the Printer Driver Settings Dialog**

As mentioned earlier, the printer driver settings dialog will be displayed every time when a print takes place if the 'Show Settings Dialog' checkbox from Figure 1 is checked. If it is not checked, you can still display the dialog by clicking 'Start->Programs->Everlast Software->ES Image Printer Driver Settings'. This will display the settings and even allow the re-checking of the 'Show Settings Dialog' checkbox so that it will be displayed, once again, at print time.

## **Advanced Printer Driver Settings**

There is an advanced way in which system administrators, power users, etc., may edit the settings without using the printer driver settings dialog. This is possible through modifying XML files. The printer driver utilizes several engines (self-configuring code modules) which each have their own XML file for settings. They are all located in the installation directory area. More specifically, if the default installation directory was used: 'C:\Program Files\everlastsoftware\ES Image Printer Driver'.

The only files of importance (or usage) here are: 'Printer Driver Engine.xml', 'Image Directory Import Engine.xml', 'File Transfer Protocol Engine.xml', and 'Email Engine.xml'.

## ***Printer Driver Engine***

This is the main engine utilized by the driver. It actually starts and uses the other engines mentioned.

- 1) ftpEngineName – The name of the FTP Engine to start. Whatever this is set to is what named XML file it will attempt to read from (minus the file extension).
- 2) emailEngineName – The name of the Email Engine to start. Again, determines which image settings XML file to use.
- 3) imageDirectoryImportEngineName – The name of the Image Directory Import Engine to start. Again, determines which image settings XML file to use.
- 4) readOnly – If set, the settings will never save, even if the print driver settings are changed and the user clicks the 'Ok' button. At print time, the settings the user changes will take place for the print, but will not be saved permanently in the XML file.
- 5) removeLocalFilesAfterPrint – Sometimes administrators don't want the printed files to be saved locally on a user's machine. Instead, the driver is more or less used for just transferring the images to someone else. If that is the case, this flag should be set to true.
- 6) showGUI – If true, the printer driver settings dialog will be displayed at print time.
- 7) workingDirectory – This is the directory in which the Printer Driver Engine will be working. Temporary files, error log files, etc., will be dumped to this directory.
- 8) httpEngineName – The name of the HTTP Engine to start.
- 9) httpTransactionEventParameterName – The parameter name to be used for "before" and "after" events when sending a batch of images through a HTTP post. This helps the post handler to determine what files are in what batches in multi-threaded situations.
- 10) httpTransactionGUIDParameterName – The parameter name for the transaction id, again, to help determine a batch of images. A transaction id is always a unique string (a GUID) for every batch.
- 11) httpTransactionFileParameterName – The parameter name for the index number of the file being uploaded (a counter).
- 12) httpTransactionFilePathParameterName – The parameter name for the original file path and name being uploaded.
- 13) showHTTPTransactionResults – If this is set to true, a dialog will be displayed with any text returned from the HTTP post. If false, no dialog is displayed.

## ***Image Directory Import Engine***

This is the engine that saves the actual images to the local computer and converts file formats (Figure 1).

- 1) abortOnError – This is the 'Abort on Recoverable Error' flag from Figure 1. If this is set to false, the engine will attempt to continue to the next file if a recoverable error occurs on an individual file.
- 2) autoRenameFileNameExtension – The extension to use for the files that are saved.
- 3) autoRenameFileNamePrefix – The prefix to use for the files that are saved.
- 4) encodeFormat – The actual image format to save the images as.
- 5) encodeImages – The native driver produces TIFF and BMP files. The Image Directory Import Engine then converts them to the specified format if they are not of those types. This can increase processing time by a small amount. If this flag is set to false, the encode format is ignored and the files are always left as their native format.
- 6) launchDefaultViewer – Once the images have been encoded, if this flag is set, the native Windows default program that handles the specified file extension will be launched.
- 7) outputDirectory – The directory to save the images to.
- 8) passAllFilesToDefaultViewer – If this flag is set to true, the filenames of all printed images will be passed to the default viewer instead of just the 1<sup>st</sup> filename.
- 9) workingDirectory – This is the directory in which the Image Directory Import Engine will be working. Temporary files, error log files, etc., will be dumped to this directory.
- 10) storeFilesLocally - This flag indicates whether the files should be permanently stored at the specified location in figure 1 or just temporarily stored until all processing takes place (emails sent, FTP transfer, etc).
- 11) forceImageSize – If true, all images that are larger than the specified max image size will be scaled down. This is useful for making thumbnails or small, consistent image sizes.
- 12) maxImageSize – This is the number of pixels to scale the images to if the 'forceImageSize' flag is true. The engine will fit either the width or the height of the image to this value if the image is larger.
- 13) consoleProgram - An optional console program that may be executed and supplied the image file names as arguments. A window will be displayed that will show the standard output messages generated by the console program. The user can interact with the program by typing into standard input through the window if the program so requires. This is not to be confused with the default viewer program, which is a GUI based Windows program. Console programs are text based and usually legacy applications.

## ***Email Engine***

This is the engine that uses SMTP to send an email to one or more people with the printed images as attachments (Figure 2).

- 1) smtpServerName – This is the IP Address or Domain Name of the SMTP server.
- 2) defaultMessageBody – The message/body of the email.
- 3) defaultSendTo – The email addresses of the people to send the email to (recipients).
- 4) defaultSentFrom – The email address that the email should appear to come from.
- 5) defaultSubject – The subject of the email.
- 6) workingDirectory – This is the directory in which the Email Engine will be working. Temporary files, error log files, etc., will be dumped to this directory.

### ***File Transfer Protocol Engine***

This is the engine that uploads the images to a FTP server (Figure 3).

- 1) loginId – The login id for the FTP server.
- 2) password – The password for the corresponding login id.
- 3) remotePort – The port in which the FTP server is listening on.
- 4) remoteDirectory - This is the location on the remote server where the files will be uploaded to.
- 5) remoteFileName - This is the filename prefix to be used for the files being uploaded. They will be assigned an incremental number in the same manner as the 'File Prefix' from Figure 1, only this time it will be on the remote server.
- 6) remoteHostName - This is the IP Address or Domain Name of the FTP server that will be receiving the files.
- 7) workingDirectory – This is the directory in which the File Transfer Protocol Engine will be working. Temporary files, error log files, etc., will be dumped to this directory.



### ***Hyper Text Transfer Protocol Engine***

This is the engine that uploads the images to a web server via HTTP or HTTPS posts (Figure 4).

- 1) url – The full URL to the web server that will receive the post.

## **SOAP Engine**

This is the engine that uploads the images to a web server via HTTP or HTTPS posts (Figure 5b).

- 1) httpEngineName - This is the name of the HTTP Engine to utilize. This allows for reuse of server URL's across multiple configurations if the same name is specified. If a different name is specified for multiple configurations, each will have it's own URL
- 2) soapAction - The SOAP action for the message.
- 3) methodName - The name of the method specified in the SOAP message.
- 4) variableName - The name of the attribute for the file bytes (base 64 encoded String).
- 5) fileVariableName - The optional name of the attribute for the file name (String).
- 6) idVariableName - This field is optional. It allows one to use the special tags in the 'ID Value' field in order to read environment variables and other settings to supply with the SOAP message. This is mainly used to uniquely identify a client sending the message.
- 7) idValue - The actual value to send through the SOAP message. The tags should be utilized here if desired. The default is '%host.name%' which sends the host's name.

### ***Database Import Engine***

This is the engine that saves the files into a database (Figure 5).

- 1) databaseEngineName – This is the name of the Database Engine to utilize. This allows for reuse of database specific settings (user, password, etc.) across multiple configurations if the same name is specified. If a different name is specified for multiple configurations, each will have it's own settings. This name must match the Database Engine XML file name (minus the '.xml').
- 2) databaseTableName - The name of the table to insert into.
- 3) databaseFilePrefixColumn – The name of the column to store the filename prefix.
- 4) databaseFileExtensionColumn – The name of the column to store the filename extension.
- 5) databaseFileBytesColumn – The name of the column to store the file's bytes.
- 6) databaseTimestampColumn – The name of the column to store a timestamp of when the file was saved into the database.
- 7) moveFiles – If set to true, the printed files will automatically be removed from the file system after being imported into the database.

## ***Database Engine***

This is the engine that stores user, password, etc., for the database (Figure 5). The 'databaseEngineName' in the Database Import Engine XML refer to one of these XML files.

- 1) databaseName – The name of the database to connect to. Not used by the driver, only for information.
- 2) databaseDriver – This is the Java class name of the actual JDBC driver to use. On Windows, if ODBC is desired, always leave this set to 'sun.jdbc.odbc.JdbcOdbcDriver'. If a specific JDBC driver is wanted, simply plug in the class name and make sure the driver is in the classpath when the driver executes.
- 3) databaseURL – The URL for the JDBC driver to connect to the database. On Windows, if ODBC is desired, the String must always start with 'jdbc:odbc:' and end with the data source name such as 'LocalServer'.
- 4) databaseUser – The user name to obtain connections to the database.
- 5) databasePassword – The password for the user name to obtain connections to the database.
- 6) maxConnectionPoolSize – The total maximum number of connections to utilize for connection pooling.
- 7) initialConnectionPoolSize – The initial number of connections to obtain from the database for use in connection pooling.
- 8) databaseShutdownStatement – If a special statement needs to be sent to shutdown a database after a print, the SQL statement can be set here.

In order to use a custom JDBC database driver, the classes must be in the Java classpath, as mentioned in the 'databaseDriver' tag above. In order to do this, you will have to make sure to modify a few configuration files. Make sure to add the jar file to the 'JarFilePath' tag in the following files:

- 1) ES\_FILE\_SYSTEM\_MONITOR.INI
- 2) ES\_CLIPBOARD\_MONITOR.INI
- 3) ES\_PRINTER\_DRIVER\_ENGINE\_SETTINGS.INI
- 4) ES\_PRINTER\_DRIVER\_LAUNCHER\_ENGINE.INI

These files can be found in the installation directory.

In the '\\windows' directory, make sure to also add to the 'JarFilePath' for the 'ES\_IMAGE\_PRINTER\_DRIVER.INI' file.

Once the files have been updated, a reboot may be required in order to ensure the driver is unloaded from memory (if the File System Monitor Engine is enabled) and picks up the new classpath.

Note: For all the mentioned XML files, only a subset of the information contained was mentioned. The other information is system settings that should not be changed. If the values are changed, the engines will most likely fail.

## Output Text Files

In addition to producing the image files, the Windows 2000, XP, 2003+ version of the driver has the capability of producing text files. The text files will be created with the same name as each image file with '.txt' tacked on the end. The text files contain ASCII characters of any real text printed by the application. This may be beneficial for those wanting to search on text or perform some programmatic effects on the images based on the text file contents. The text files also contain endline (newline) characters but no carriage returns. Some programs, like Notepad, may not display the text files properly because of the missing carriage returns. Most text editors can display the files properly however (Wordpad for example).

This feature is not enabled by default. It can be enabled through the installer by checking the 'Output Text Files' checkbox. It can also be enabled/disabled after the fact by modifying the '\\WINDOWS\\ES\_IMAGE\_PRINTER\_DRIVER.INI' file and setting the 'OutputText' value equal to 'true' or 'false'.

**NOTE:** Images of text are not real text characters, so they will not produce text files.

## Printer Driver Engine Launcher

The Printer Driver Engine Launcher component is utilized by default. The launcher is a way to present a dialog box to the user at print time, so the user may pick a specific print configuration. Even if the launcher is enabled, no dialog box will be presented to the user unless more than one configuration mapping exists. When the launcher is not used, the driver will always reuse the same configuration (but that configuration can still be changed on the fly with the graphical user interface). Often times, users will want certain files to go to different directories. Perhaps some files should always be emailed when they are printed, while others should be simply saved to an archive location. The user has the power and flexibility to have completely different configurations bound to a single text value. Each text value is mapped to a specific Printer Driver Engine. The default 'Printer Driver Engine.xml' file may be copied and renamed in order to have multiple configurations. The actual mapping of the text value to the specific Printer Driver Engine takes place in 'Printer Driver Launcher Engine.xml'.

Here is the default setup (a single option for the user to choose from through the launcher):

```
<engineMappings>
  <com.everlast.engine.EngineMapping>
    <text>Default</text>
    <engineName>c:\Program Files\EverlastSoftware\ES Image Printer
Driver\Printer Driver Engine</engineName>
  </com.everlast.engine.EngineMapping>
</engineMappings>
```

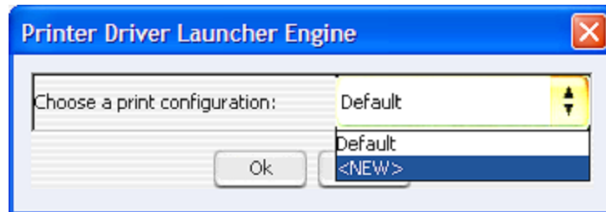
In order to have multiple configurations, a user may do something like the following:

```
<engineMappings>
  <com.everlast.engine.EngineMapping>
    <text>Top Security Documents</text>
    <engineName>c:\Program Files\EverlastSoftware\ES Image Printer
Driver\Top Security Printer Driver Engine</engineName>
  </com.everlast.engine.EngineMapping>
  <com.everlast.engine.EngineMapping>
    <text>Regular Documents</text>
    <engineName>c:\Program Files\EverlastSoftware\ES Image Printer
Driver\Regular Printer Driver Engine</engineName>
  </com.everlast.engine.EngineMapping>
</engineMappings>
```

Since each 'Printer Driver Engine.xml' file can point to other engines (Image Directory Import Engine, Email Engine, etc), it's possible to have any number of configurations at any level. In fact, each Printer Driver Engine could point to the same engines if all the settings should be the same. Changing the settings in the single XML file (pointed to by the multiple Printer Driver Engines) would cause all configurations to automatically pickup those settings.

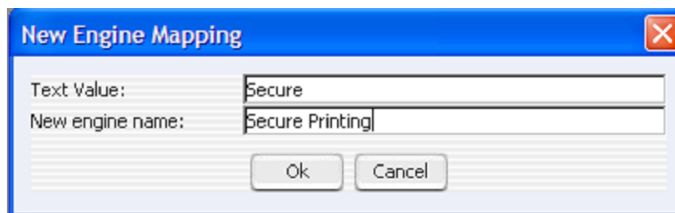
Executing the 'ES Image Printer Driver Launcher Settings' (es\_printer\_driver\_launcher.exe) allows one to change settings for multiple configurations through the standard GUI (see Figures 1-5). Figure 6b demonstrates the dialog.

The configurations may either be created manually, or through the '<NEW>' selection from the combo box. Using the dialog makes it much easier, since all required XML files are generated automatically, instead of the user having to copy each one manually. However, sometimes a programmatic approach is necessary, so manual intervention on the XML is always an option.



**FIGURE 6b**

If '<NEW>' is selected, another dialog will be displayed after clicking 'Ok'. The dialog asks for the friendly text value (displayed in the launcher's combo box) and the engine name to utilize. The engine name is the filename of the XML file (minus the '.xml'). Figure 6c is an example of a configuration for secure documents.



**FIGURE 6c**

If it is not desirable to display a GUI dialog, or the system is headless (no graphical user interface), the 'showGUI' flag in the XML can be set to 'false'. If this flag is set to false, the launcher will automatically use the engine name pointed to by the 'defaultEngineMapping' tag. This allows one to always leave the launcher enabled, but never have it display a dialog for the user to choose, even if more than one mapping had been set in the XML file (they are always ignored).

If the driver is enabled to output additional text files, the contents of these files may be searched at print time to match to a specified engine based on a text value (case of the text is ignored). The following XML tags demonstrate choosing from two different engine mappings based on some possible string values inside the text files.

```
<imageTextEngineMappings>
  <com.everlast.data.StringPair>
    <name>Default</name>
    <values>
      <string>Low Security</string>
      <string>Medium Security</string>
    </values>
  </com.everlast.data.StringPair>
  <com.everlast.data.StringPair>
    <name>Secure</name>
    <values>
      <string>High Security</string>
    </values>
  </com.everlast.data.StringPair>
</imageTextEngineMappings>
```

Either the 'Default' or 'High Security' mapping will be picked if any of those values are found within the text files. If none of the values are found, the default settings are taken from the Printer Driver Launcher Engine (user may or may not be presented with choice based on other settings). In other words, it's like the values weren't found and the engine operates normally as if the text files weren't there to process.

```
<imageTextIndividualFiles>>false</imageTextIndividualFiles>
```

The 'imageTextIndividualFiles' tag will process each image file separately based on its individual text file if set to true. If set to false (default), all image files will be passed to the found engine mapping based on the first value found in one of the text files.

```
<sendTextFiles>>true</sendTextFiles>
```

The 'sendTextFiles' tag will cause the text files to be saved and processed through the Printer Driver Engine as normal files. They will be attached to emails, uploaded via HTTP, saved into the database, etc. If set to false, the text files are only utilized for the automatic choosing of the engine mapping as described above and then removed afterwards.



## **XML Generation**

The Printer Driver Launcher Engine also has the ability to generate XML files containing information about the processed images, machine environment, etc. This feature is disabled by default, but can easily be enabled by setting the following:

```
<generateXMLFile>true</generateXMLFile>
```

If true, an XML file will be generated with the same filename as the first image, plus '.xml' appended on the end.

Sometimes, in a business environment, it may be useful to gather some information about the machine, user, etc. This can be done by setting the following:

```
<outputEnvironmentVariablesToXML>false</outputEnvironmentVariablesToXML>
```

By setting the flag to true, many system properties, environment variables, etc., will be output into the XML file. A few examples are the machine name, the user name, the system path, Java version, etc.

By default, the generated XML files are processed through the other engines (executing a console process, emailing, http upload, etc). This can be disabled, so the XML file is only produced in the local directory, by setting the following:

```
<passXMLForProcessing>false</passXMLForProcessing>
```

## ***Input Gathering GUI Components***

The power of the launcher does not stop there. It has the ability to have custom GUI components displayed before the actual processing of the images takes place. This is a feature that allows developers to potentially embed the driver in their product with minimal customizations. It also allows businesses to gather more information from the user to process with the images. The GUI components can be labels, text boxes, combo boxes, radio buttons, check boxes, etc. There is even a 'browse' button to allow a user to select a directory. Almost any Java component can be utilized.

The following is an example that utilizes various components (intended to be embedded in another product that utilizes this information):

```
<engineMappings>
  <com.everlast.engine.EngineMapping>
    <text>Default</text>
    <engineName>c:\Program Files\EverlastSoftware\ES Image Printer
Driver\Printer Driver Engine</engineName>
  </com.everlast.engine.EngineMapping>
  <com.everlast.engine.EngineMapping>
    <text>Top Security Documents </text>
    <engineName>Top Security Documents</engineName>
  <guiMappings>
    <com.everlast.data.GUIMapping>
      <text>Print</text>
      <toolTip>Print to a specified printer</toolTip>
      <disabled>false</disabled>
      <guiClass>javax.swing.JRadioButton</guiClass>
      <panelName>Panel 1</panelName>
      <disableAssociatedNames>
        <string>directory_label</string>
        <string>directory_text_field</string>
        <string>browse_button</string>
      </disableAssociatedNames>
    </com.everlast.data.GUIMapping>
    <com.everlast.data.GUIMapping>
      <text>Save</text>
      <toolTip>Save the images to the secure location</toolTip>
      <disabled>false</disabled>
      <guiClass>javax.swing.JRadioButton</guiClass>
      <panelName>Panel 1</panelName>
    </com.everlast.data.GUIMapping>
    <com.everlast.data.GUIMapping>
      <text>Both</text>
      <toolTip>Print to a specified printer and save the images to
the secure location</toolTip>
      <disabled>false</disabled>
      <guiClass>javax.swing.JRadioButton</guiClass>
      <panelName>Panel 1</panelName>
    </com.everlast.data.GUIMapping>
    <com.everlast.data.GUIMapping>
      <text>Secure Save Location: </text>
      <toolTip></toolTip>
```

```

        <disabled>false</disabled>
        <guiClass>javax.swing.JLabel</guiClass>
        <panelName>Panel 2</panelName>
        <name>directory_label</name>
    </com.everlast.data.GUIMapping>
    <com.everlast.data.GUIMapping>
        <text></text>
        <tooltip>The secure location to save the files </tooltip>
        <disabled>false</disabled>
        <guiClass>javax.swing.JTextField</guiClass>
        <panelName>Panel 2</panelName>
        <name>directory_text_field</name>
    </com.everlast.data.GUIMapping>
    <com.everlast.data.GUIMapping>
        <text>Browse</text>
        <tooltip>Displays a file navigation dialog</tooltip>
        <disabled>false</disabled>
        <guiClass>com.everlast.gui.swing.BrowseButton</guiClass>
        <panelName>Panel 2</panelName>
        <name>browse_button</name>
        <associatedName>dir</associatedName>
    </com.everlast.data.GUIMapping>
    </guiMappings>
</com.everlast.engine.EngineMapping>
</engineMappings>

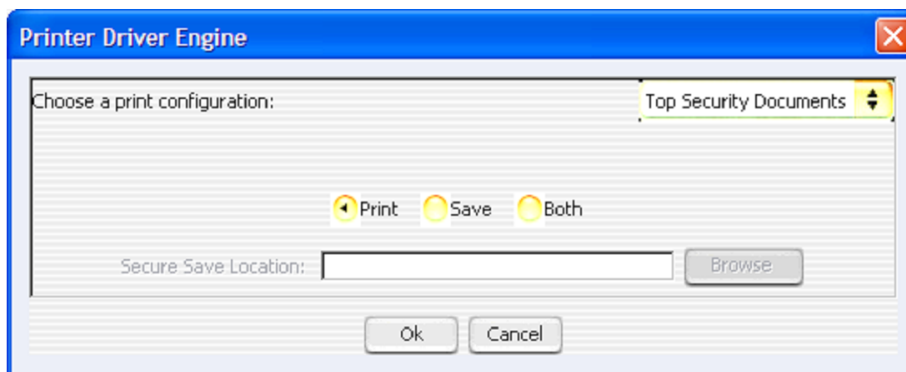
```

By looking at the XML, we notice the 'default' configuration has no custom GUI components. Figure 6d demonstrates what the dialog looks like when that configuration is selected.



**FIGURE 6d**

By selecting 'Top Security Documents', the dialog suddenly changes to display the custom GUI components (Figure 6e).



**FIGURE 6e**

There are three radio buttons, one label, one text box, and one browse button. The type of component is determined by the 'guiClass' tag. The following is a list of the possible default GUI components:

Browse Button:	<code>'com.everlast.gui.swing.BrowseButton'</code>
Radio Button:	<code>'javax.swing.JRadioButton'</code>
Check Box:	<code>'javax.swing.JCheckBox'</code>
Combo Box:	<code>'javax.swing.JComboBox'</code>
Text Field:	<code>'javax.swing.JTextField'</code>
Text Area:	<code>'javax.swing.JTextArea'</code>
Label:	<code>'javax.swing.JLabel'</code>

Additional controls can be added as long as they extend some of those base components, and the classes are in the classpath.

The `<text>` tag is the text to be displayed on the control.

The `<toolTip>` tag displays the specified text if the user hovers the mouse over the component for a brief period of time.

The `<panelName>` tag is used to group together the various components. As we can see from Figure 6e, the three radio buttons are in one panel and the other components are in another. This allows one to have some control over how the GUI components are displayed. A basic `FlowLayout` is used for each component in the same panel. The panel names can be anything as long as they are unique for each one.

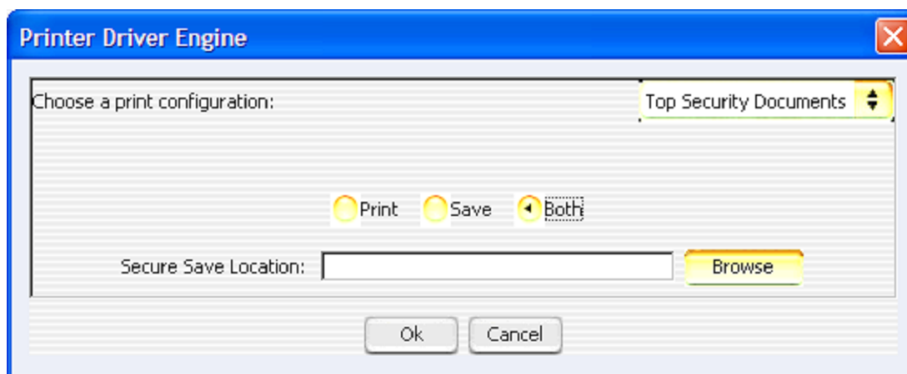
The `<disabled>` tag makes the component not be able to receive focus or take input if set to true.

The `<associatedName>` tag is currently only utilized by the browse button. It allows the browse button to fill in the text of a specified component after a directory is chosen.

The `<hideAssociatedNames>` tag hides any components with the specified names if the current component is selected (checkbox, radio button, etc).

The `<disableAssociatedNames>` tag disables any components with the specified names if the current component is selected (checkbox, radio button, etc). This is why the button appears "grayed" out in Figure 6e.

Figure 6f below shows that when 'Both' is selected, the browse button and text field are enabled (components are enabled by default).



**FIGURE 6f**

The following is the contents of an actual XML file produced by the launcher:

```
<com.everlast.storage.PrinterDriverLauncherEnginePacket>
  <outputDirectory>C:\printedFiles</outputDirectory>
  <outputFiles>
    <string>c:\printedFiles\printed_1.tif</string>
  </outputFiles>
  <guiInput>
    <com.everlast.data.GUIInput>
      <text>Print</text>
      <selected>>false</selected>
    </com.everlast.data.GUIInput>
    <com.everlast.data.GUIInput>
      <text>Save</text>
      <selected>>false</selected>
    </com.everlast.data.GUIInput>
    <com.everlast.data.GUIInput>
      <text>Both</text>
      <selected>>true</selected>
    </com.everlast.data.GUIInput>
    <com.everlast.data.GUIInput>
      <name>directory_text_field</name>
      <text>\\topsecretserver\c\secure_documents</text>
      <selected>>false</selected>
    </com.everlast.data.GUIInput>
  </guiInput>
</com.everlast.storage.PrinterDriverLauncherEnginePacket>
```

The `<selected>` tag specifies whether the component was selected or not (checkboxes and radio buttons).

The `<name>` tag specifies the component.

The `<text>` tag specifies text of the component. This is the contents of text fields or the actual displayed text on labels, buttons, etc. From our example, we can see the directory the user entered is specified in this field for the 'directory\_text\_field' component.

### ***Enable/Disable the Launcher***

If it is desired to permanently enable/disable the launcher later on after install, the following simple steps may be taken:

**To disable the launcher** – Rename the 'ES\_IMAGE\_PRINTER\_DRIVER.INI' in the Windows directory to 'ES\_IMAGE\_PRINTER\_DRIVER\_LAUNCHER.INI'. Then, rename the 'ES\_IMAGE\_PRINTER\_DRIVER\_DEFAULT.INI' file back to 'ES\_IMAGE\_PRINTER\_DRIVER.INI'.

The next step is to open the 'File System Monitor Engine.xml' file. The 'printerDriverEngineName' should be set to 'Printer Driver Engine'.

**To enable the launcher** – Rename the 'ES\_IMAGE\_PRINTER\_DRIVER.INI' in the Windows directory to 'ES\_IMAGE\_PRINTER\_DRIVER\_DEFAULT.INI'. Then, rename the 'ES\_IMAGE\_PRINTER\_DRIVER\_LAUNCHER.INI' file to 'ES\_IMAGE\_PRINTER\_DRIVER.INI'.

The next step is to open the 'File System Monitor Engine.xml' file. The 'printerDriverEngineName' should be set to 'Printer Driver Launcher Engine'.

## File and Output Directory Tags

The ES Image Printer Driver has the ability to specify special tags in the file prefixes, file extensions, and output directories (see Figure 1). This allows one to have great control over where files should go and what they should be named. These special tags are indicated by a value inside two '%' characters. For example, in order to have the file be named the current date, the following would be set in the file prefix field:

```
%month%-%day%-%year%
```

Those tags would create example filenames such as '02-15-2005', '10-03-1995', etc.

Regular characters can be mixed with tags as well. In order to have output such as 'Printed - 02-15-2005' and 'Printed - 10-03-1995', the following prefix could be used:

```
Printed - %month%-%day%-%year%
```

One could do the following in order to create a subdirectory for each file, based on the current day, by placing the following in the file prefix field:

```
\%month%-%day%-%year%\printed_document
```

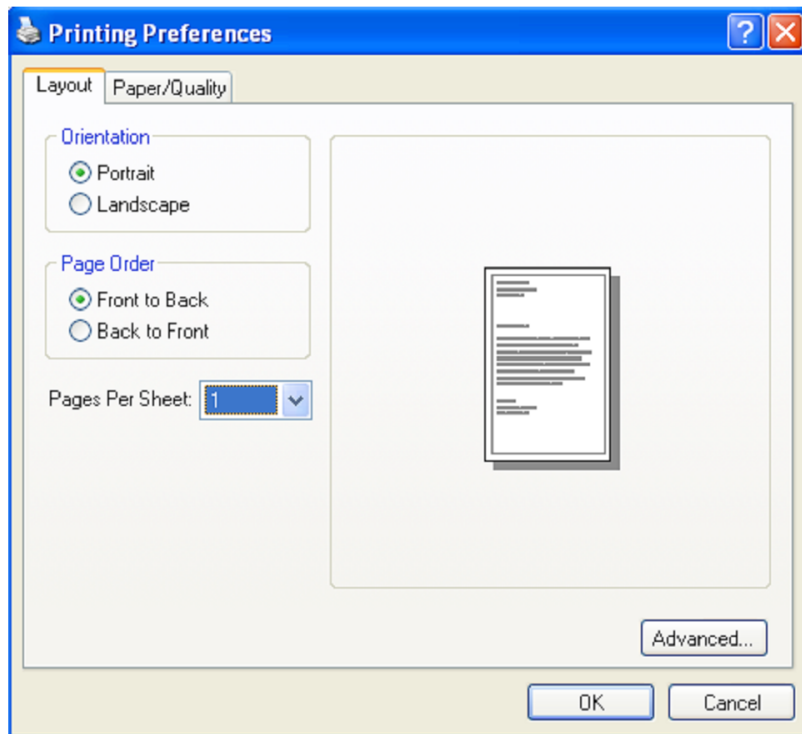
The following is a list of all the practical tags that may be used:

- guid – Generates a random GUID (Globally Unique Identifier)
- year – Four digit year
- month – Two digit month
- day – Two digit day
- hour – Two digit hour
- minute – Two digit minute
- second – Two digit second
- millisecond – Four digit millisecond
- longtime – Single timestamp value to the millisecond
- user.name – User name of the current user
- host.name – The host name of the machine
- host.address – The IP address of the host machine
- user.home – The home directory for the current user
- user.dir – The current user's directory
- java.io.tmpdir – The temp directory
- launch.text – The text value selected by the user in the launcher
- launch.engine – The engine name selected by the user in the launcher
- xml.dir – The directory where the engine XML files are being utilized
- log.dir – The directory where the main log XML files are being written

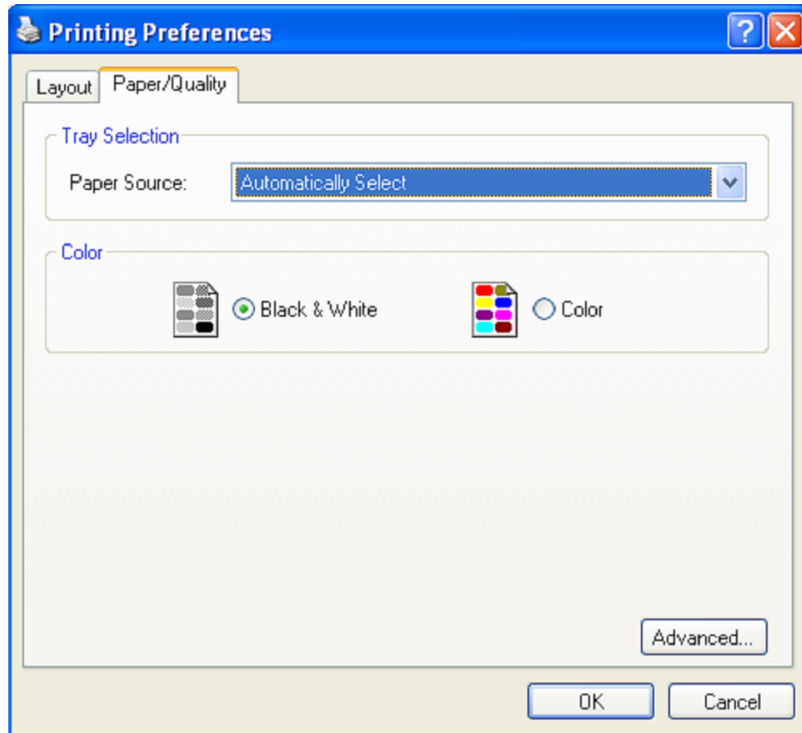


## Native Printer Driver Settings

The ES Image Printer driver has a native component, which is the actual piece that the Windows programs talk to directly. It has its own settings for color format, paper size, DPI, etc. The dialogs for talking to the native driver can appear different from program to program since they can all have their own unique look and feel. The sample dialogs used in this manual may be somewhat different than what actually appears in each program, but the overall information and concepts are the same. The first general dialog displayed in many programs is the general printer settings dialog (Figures 7 and 8). It typically has a 'Layout' tab, which is used to select portrait, landscape, etc. as well as a 'Paper/Quality' tab that is used for paper source, color format, etc.



**FIGURE 7**

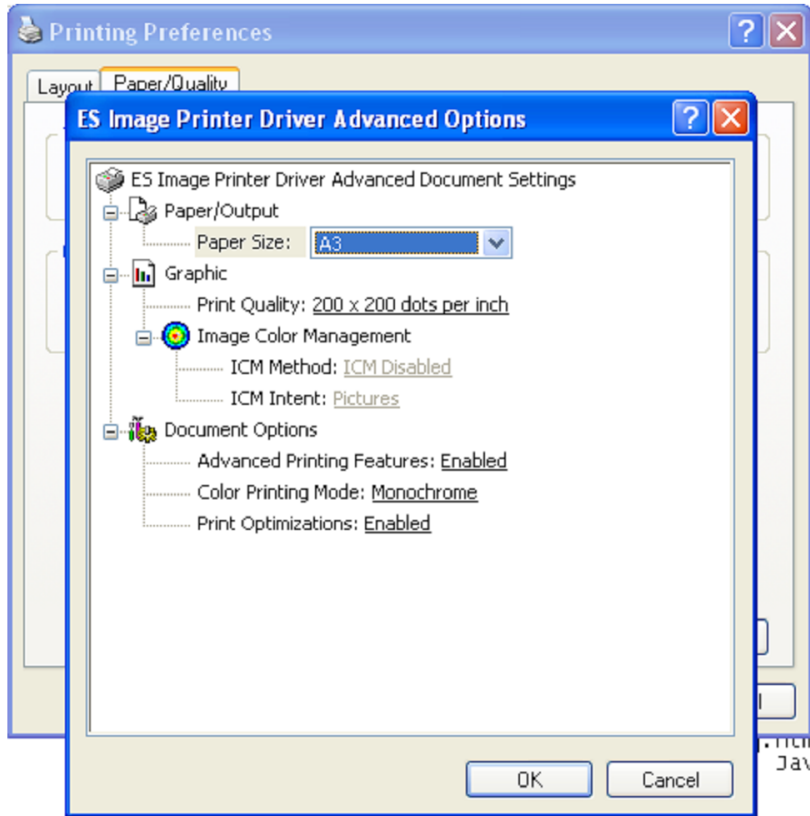


**FIGURE 8**

- 1) The driver supports the two standard orientation types: 'portrait' and 'landscape'.
- 2) There are also two page orders possible: 'front to back' and 'back to front'. The default is 'front to back', which means the images created are in normal order. 'back to front' reverses the pages so the first image created is actually the last page printed.
- 3) The pages per sheet option determines how many pages get put into a single image. The pages are basically scaled down versions of each image put into a single image.
- 4) The paper source is irrelevant to the driver.
- 5) There are 2 color formats: 1-bit black and white and 24-bit color.

### **Advanced Native Printer Driver Settings**

Most printers have an 'advanced' dialog to control infrequently used options. Figure 9 is a sample of this dialog for the driver.

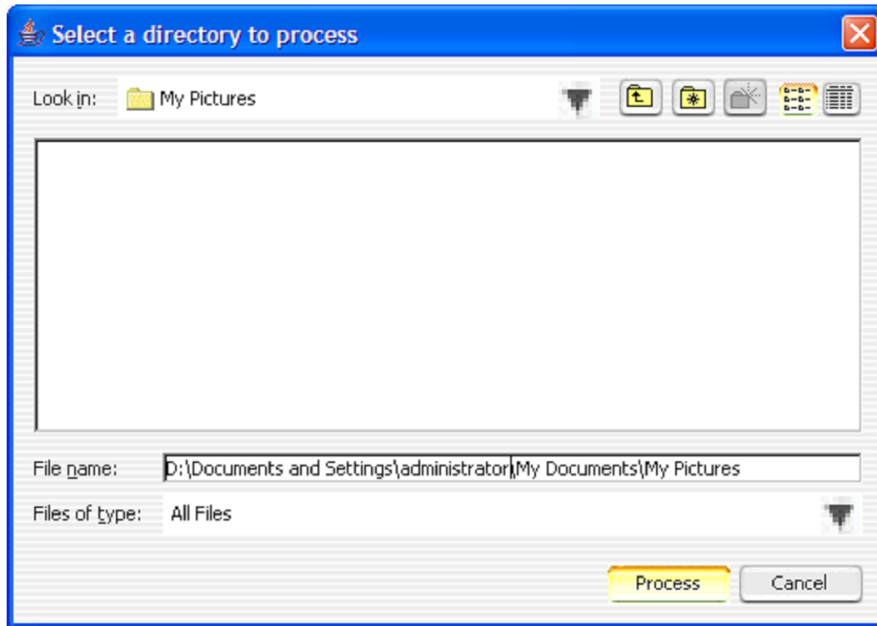


**FIGURE 9**

- 1) Paper/Output: This is the actual paper size to emulate for the driver. It is highly recommended to select either 'A4' for maximum compatibility. Sometimes, depending on the image being created and orientation, certain paper sizes fail to create images properly. Sometimes  $\frac{3}{4}$  of a page appears in one image and the other  $\frac{1}{4}$  appears in the next. To avoid this, the paper size may be adjusted.
- 2) Graphic: The only applicable option here is the Print Quality, or DPI (Dots Per Inch). The default DPI is 200x200. The driver actually supports 100, 200, 300, and 600. The Image Color Management is irrelevant for the driver.
- 3) Document Options: The only option that is somewhat useful is the Color Printing Mode. This is just another way to adjust the color format. Typically, this can be set on the general settings of the native driver instead of having to go to the advanced dialog.

## File System Processor

The File System Processor ('es\_file\_system\_processor.exe') is a utility that taps into the core of the Printer Driver Engine in order to import/convert/capture images from a directory. The Processor displays a file system navigation dialog box to allow a user to pick the directory (Figure 10).



Once the directory is selected, the user may click the 'Process' button in order to send the files through the engine. The files will be treated as though they were actually printed directly to the driver. The original files will not be moved, deleted, or altered in any way. The produced files will always be copies. It is a great utility for converting a bunch of images into another type. It can even be used to embed multiple images into a single PDF or multi-page TIFF file (beware of mixing color and black and white images in a single TIFF because some application may not handle these properly). The files can still be emailed, uploaded, saved into a database, etc., just like they would from a regular print.

## Clipboard Monitor

The ES Image Printer Driver comes with a tool called the clipboard monitor. It is a program that stays resident in memory, waiting for an image to be copied to the clipboard.

The monitor is great for easily capturing screenshots and enabling instant email, FTP, etc. It can save tremendous time for troubleshooting and sending information.

If an image is copied to the clipboard, the monitor will popup a dialog asking whether to process the image through the printer driver engine or not. The user may choose to ignore the copy or send the image through the printer driver engine. If processing was chosen, the image will be treated as if it were printed through the driver and the user will be given the standard printer driver options. The clipboard is left undisturbed regardless of whether the image was processed or not.

The clipboard monitor is a program named 'es\_clipboard\_monitor.exe' and can be terminated at any time through Windows Task Manager, or disabled permanently through the 'Disable ES Image Printer Driver Clipboard Monitor' shortcut in the programs menu.