

ES IMAGE PRINTER DRIVER 64-BIT INSTALLATION MANUAL

Prerequisites

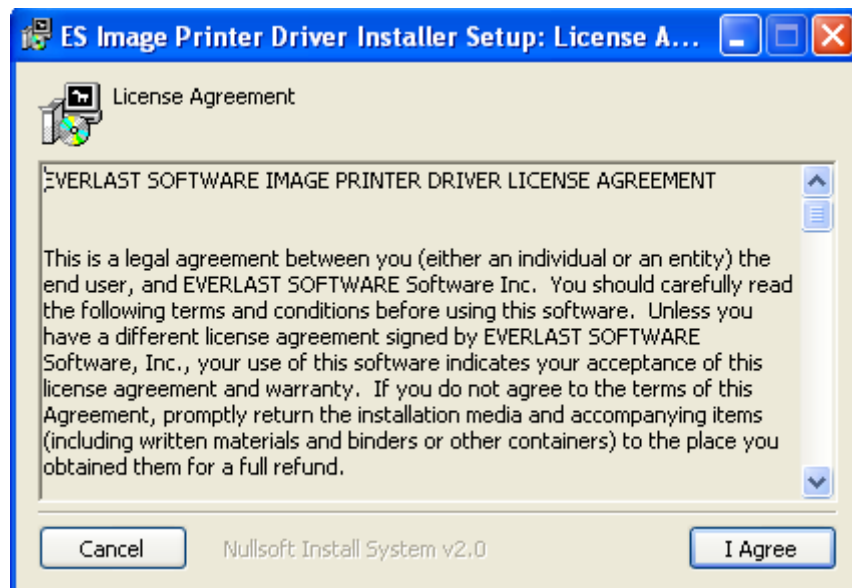
- 64-bit versions of: XP Home/Professional (Service Pack 2), 2000 (Service Pack 4), 2003, 2008, Vista, 7, 8.

Installation Steps

This section contains step-by-step instructions in regards to installing the ES Image Printer Driver software. Further in the section, the installation instructions may differ based on the Operating System used. The instructions will indicate which steps to follow at that point. Until then, simply follow each step one by one and installation will be a success. Each step may contain small screenshots to aid in the installation process. These screenshots act ONLY as an aid, and should not be used exclusively for installation.

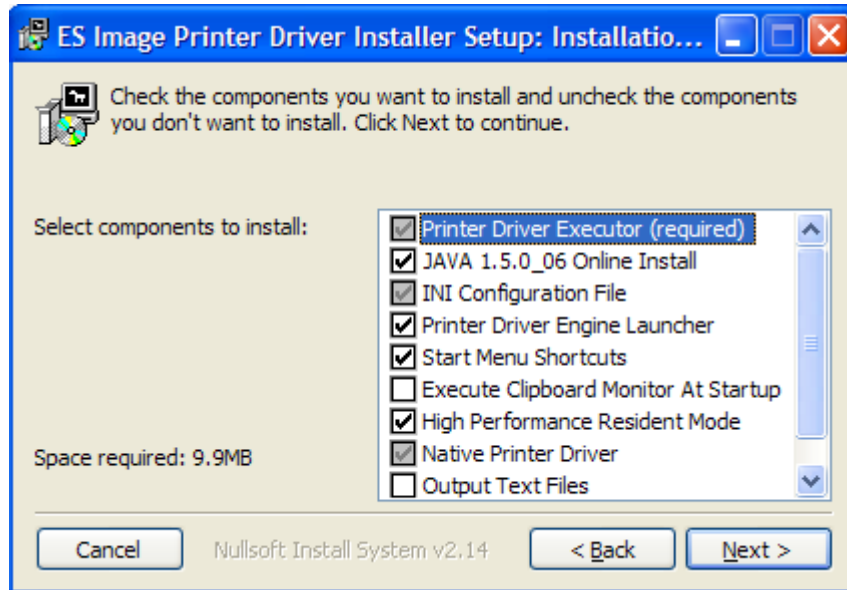
Step 1) Execute the printer driver EXE file by double clicking on it through 'Windows Explorer'.

Step 2) The license agreement dialog (Figure 1) will be displayed on the screen at this point. Please read through the license agreement and click 'I Agree' if you agree and wish to install the software.



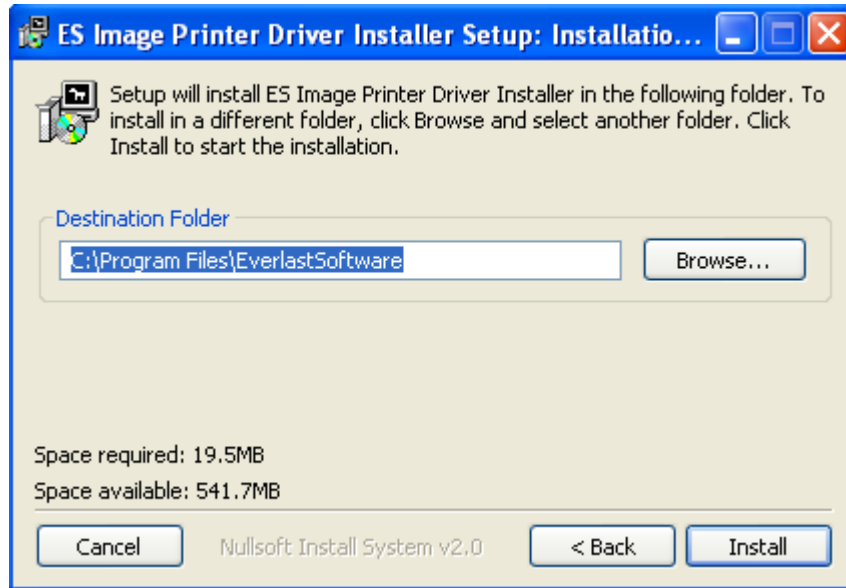
(FIGURE 1)

Step 3) The next step is to choose which components to install. The components dialog (Figure 2) fulfills this purpose. Typically a user will want to leave everything checked as is. However, advanced users may choose which components NOT to install from this dialog by un-checking each component. Throughout the installation process, if a mistake is made, the 'Cancel' button may be clicked to revert the installation. Likewise, the 'Back' button may be used if a previous selection needs to be changed on a previous dialog. Once all components are chosen, simply click the 'Install' button.



(FIGURE 2)

Step 4) The next dialog displayed is the installation location dialog (Figure 3). This is where a user can change where the software will be installed. It is **HIGHLY** recommended not changing the installation path because other associated files may have to be manually updated. Only advanced users who know how to update the associated files should change the installation location. Click the 'Install' button to continue the installation process.



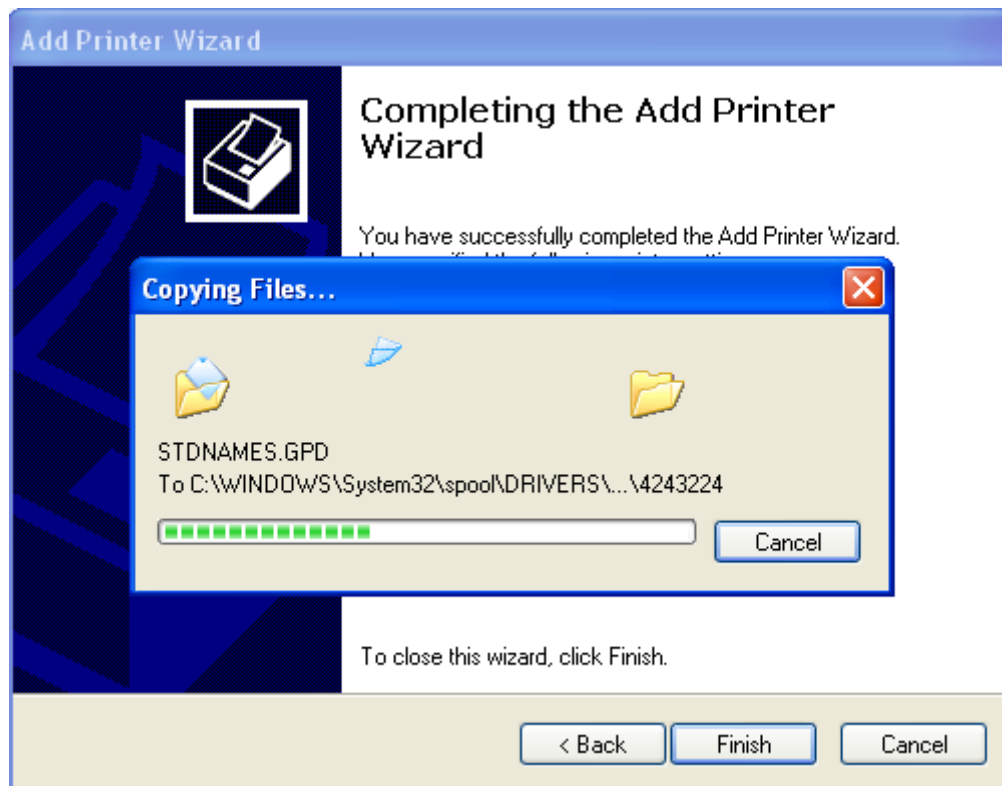
(FIGURE 3)

Step 5) Windows will display a warning about the driver not being certified by Microsoft (FIGURE 4). This is perfectly normal. Click 'Continue Anyway' to continue.



(FIGURE 4)

A progress dialog will be displayed during the file copying process (FIGURE 5).



(FIGURE 5)

Congratulations! The driver has been successfully installed and is ready for usage. Please refer to the User Manual for usage instructions.

Advanced Options

As mentioned earlier, most users will want to go with the default installation settings. If this is not desirable, the components to install can be chosen from Figure 2.

Start Menu Shortcuts – If unchecked, no menu items will be installed in the Windows Start Menu.

Execute Clipboard Monitor At Startup – If the user wishes to enable the ES Clipboard Monitor Engine to start every time a user logs into Windows, check this box.

High Performance Resident Mode – If unchecked, the Printer Driver Engine will not remain loaded in memory. While this will save memory while not being used, it makes each print take much longer as the engines are reloaded each time (and the Java Runtime Environment as well). It is highly recommended to leave this enabled for performance reasons.

Windows Service – This option will start the driver as a Windows service and execute as the user the service is set to. This is only for advanced users that understand the purpose of services.

Output Text Files – The driver has the ability to generate associated text files for images. This can be useful for searching, loading into a Word document, etc. The text file will have the same name as the image produced, plus a '.txt' file extension appended on the end.